



VETT 216 Vet Clinical Pathology III section name section credit hours Credits Syllabus

Course Information

Meeting times and location: section meeting_times section location

Catalog description: Veterinary Clinical Pathology 3 is an advanced course designed to instruct students in hematology, cytology, histopathology, blood chemistry, urinalysis, and diagnostic microbiology.

Prerequisites: Student must have clinical site and preceptor approved.

Terms offered: All Semesters

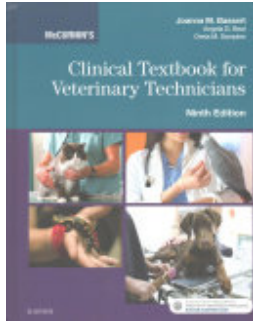
Section-specific Course Description:

Course Level Objectives

This course covers:

1. Advanced hematological procedures
2. Hematology and urinalysis testing
3. Diagnostic Microbiology
4. Clinical chemistries
5. Cytological examinations
6. Bone marrow examinations

Required Texts and/or Materials



McCurnin's Clinical Textbook for Veterinary Technicians - Textbook and Workbook Package

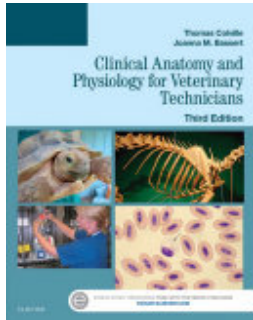
9780323442756

Joanna M. Bassert, John Thomas

Saunders

2017-03-31

9th



Clinical Anatomy and Physiology for Veterinary Technicians

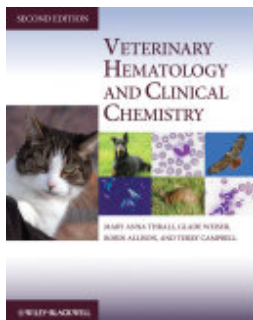
9780323227933

Thomas P. Colville, Joanna M. Bassert

Elsevier Health Sciences

2015-03-19

3rd



Veterinary Hematology and Clinical Chemistry

9781118378403

Mary Anna Thrall, Glade Weiser, Robin Allison, Terry Campbell

John Wiley & Sons

2012-07-02

2nd

Essential Clinical Procedures

978-1-68135-748-5

Kristin Loy

Bluedoor

2018

1st

Required Technology and Software

- Canvas
- Chrome, Safari, or Firefox

Technical Support

Technical support is available through the San Juan College Help Desk 24/7/365. The help desk can be reached at 505-566-3266 or by creating a ticket at [San Juan College Help Desk](#).

For tickets and password reset: [San Juan College Help Desk](#)

For Canvas support information: [Canvas Support](#)

Accessibility/Privacy Policies for all Technology Tools Used

[Accessibility/Privacy Policies for all Technology Tools Used](#)

Course Requirements

Students will do the following activities:

Students will do the following activities: Students will be required to take assessments during the 12 week course. These assessments combine discussion board posts, written assignments, quizzes, and exams. There will also be available additional websites and articles to help supplement reading for a better understanding on a topic. These are not required unless stated for a specific assignment or assessment, but may help a student better understand specific material.

COVID Safe Practices for Being on Campus

Masks / cloth face coverings must be worn while on campus in accordance with the New Mexico public health order. If you feel that you cannot wear a mask due to health complications, please contact Disabilities Services:

disabilityservices@sanjuancollege.edu or call (505) 566-3271. Hand sanitizer stations are at all building entrances, please “wash in, wash out”--clean your hands when you enter and before you leave. Classrooms and labs have been arranged to allow for social distancing; please respect your classmates and instructors by staying 6 feet away from everyone. You will be expected to disinfect your table or area prior to class and after class, cleaning products will be provided for this purpose. Check with your instructor for specific policies for their course. Please do not congregate in hallways or common areas, instead utilize our beautiful outside spaces and weather to visit with your friends and colleagues from a safe distance.

If you have been in contact with anyone who has tested positive for COVID-19, has symptoms, or is waiting on test results, contact your instructor and DO NOT come to class. If you have tested positive, have symptoms or are waiting on test results, contact your instructor and DO NOT come to class. Your health care provider or the assigned contact tracer will let you know when it is safe for you to be around others.

Student Support

Student Services and Support

The Student Support webpage provides information on counseling, tutoring, technical support, and many other support services available to San Juan College students.

[Student Support](#)

Academic Support

Academic Support webpage provides information on academic advising, the library, Testing Center, and the honors program.

[Academic Support](#)

Participation and Attendance Policy

Students must complete the class by the course end date with the required number of points.

San Juan College Policy: Class Attendance and Participation Expectations for Online Courses – Spring Semester 2021

Students are expected to participate regularly and submit all course assignments, based on the course guide definition. In this course, a student who does not submit two consecutive assignments, without consulting the instructor, may be considered as having abandoned the course and a note will be entered into Web Advisor and the Registrar's Office will take appropriate action. Logging into the course does not meet the attendance standard.

You have to remain active in the course-not only so you learn the material and are successful- but so you are not dropped for non-attendance.

Other Classroom Policies and Expectations

Late Submissions Policy

- Quizzes and Discussion Boards - No late submissions will be accepted for these assignments - once closed they will not be reopened.

Canvas Participation and Expectations

Students are to log into Canvas and their course a minimum of 3 times per week. However, it doesn't hurt to log in everyday and check Announcements or student emails as this is how the instructor will keep in touch when assignments are due and if anything changes.

Failure to Meet Class Participation Expectation:

Students who fail to meet participation expectations will have their last date of attendance recorded in Web Advisor. This date will be used to recalculate any financial aid received/veteran's benefits received, and the student may be required to repay the institution/government. If the student does not drop the course, an 'X' grade will be recorded. An 'X' grade impacts the grade point average the same as an 'F'.

Other Classroom Policies and Expectations

If your coursework or class submissions are going to be late, due to an unforeseen circumstance please contact your course instructor as soon as possible and let them know. If you need an extension of your course past the course end date, for any reason, please contact your instructor as soon as possible for the exact criteria for a course extension. Remember, late work may be subject to point penalties, so if your course work is going to be late, always contact your instructor.

Instructor Response Time

Students may expect to have any assignments graded and the grades posted within three working days (72 hours) of submission. This will only pertain to the assignments that the instructor has asked you to submit. Many assignments are not submitted and are there to help you learn the material before taking the quiz for that week. If there is going to be a delay in posting grades your instructor will post an announcement on your course site.

Instructors will return emails within 24 hours of submission or sooner. If it is an emergency students are asked to call the instructors contact information.

Course Time Commitment

Students can expect to spend a minimum of 2-3 hours per week on course material (including written assignment and quiz).

Students can expect to spend a decent amount of time completing the Course Task Checklist. This will be dependent on how long it takes a student to master a task and how much time can be spent between the student and Preceptor.

It is important that students look over the Course Task Checklist at the beginning of the semester with his/her Preceptor and address any concerns at that time in getting these tasks completed.

Grading

Final grades are calculated based on the following...

Course Grading Scale 530 Possible Points		
Letter Grade	%	Point Range
A	90 - 100 %	729-810
B	80 - 89.99 %	728-648
C	70 - 79.99 %	647-567
F	Below 70%	566 and below

Key Dates to Remember

[Full Academic Calendar](#)

Course Schedule

Students will have access to the course schedule in the semester they are taking the course as assignments and assessments may change each semester.

College Policies

The following information also applies to your work in this class. If you have special needs for campus emergency situations, please inform me immediately.

1. **Academic Accommodations - American with Disabilities Act (ADA)**

If you believe you need academic accommodations due to physical or learning disabilities, you are encouraged to inform them as soon as possible. The coordinator can work with you in verifying your disabilities and developing accommodation strategies. Please go to [Disability Services Office](#), click the button for "Request for Services" and complete all the steps.

You can also contact the college's disability coordinator in the Advising/Counseling Center at 566-3271 or disabilityservices@sanjuancollege.edu. More information is available on the website listed above.

2. **The Family Educational Rights and Privacy Act (FERPA)**

Your personal information and grade are confidential. Aside from routine reporting to the college required for this course, I will not share such information with anyone unless I have your permission.

3. **Academic Honesty Rules**

San Juan College expects all students to adhere to the [Academic Honesty Rules](#) as posted online. These are the official guidelines for all classes at San Juan College (July 2006).

4. **Student Conduct Statement**

College is preparation for professional opportunities, and professional conduct is expected in courses, including online classes, as well as any written communications, and interactions with members of the college community. As part of our learning community, students are expected to interact and communicate in a mature, respectful, thoughtful, and supportive manner. Students who demonstrate disrespectful, hostile, belittling, bullying or other disruptive behavior will be subject to potential consequences and possible dismissal from the college. The college will take appropriate action when students demonstrate threatening behavior (to others or self). Students should refer to the Code of Conduct in the Student Handbook for additional information.

5. **Student Safety**

Keeping students safe is a priority, and part of that is ensuring that we have the ability to communicate emergency messages – whether for school closures due to weather or for more or urgent situations. Rave is San Juan College's emergency messaging system. Through your SJC student email, you will automatically receive email messages, however, it is also vital that you receive text messages. In order to receive the messages, you must register in a simple process with [Rave](#). When registering, please make sure that your mobile status is "confirmed."

The Department of Public Safety is available 24 hours per day. In an emergency, they can be accessed by calling 215-3091 or 566-3333.

In the event of an emergency, a Rave message will be sent, and depending on the situation, you will be instructed to do one of the following:

- Evacuate the building
- Shelter in place (Campus doors are locked, and operations continue as normal. During this situation, no one other than law enforcement is allowed in or out of the campus.)
- Lockdown (Campus doors are locked. All operations cease, and you should take cover in your immediate area. No one other than law enforcement is allowed in or out of the campus.)

6. Non-Discrimination, Sexual Harassment, and Retaliation.

San Juan College does not discriminate on the basis of race, color, religion, sex, sexual orientation, gender identity, national origin, disability, age, genetic, veteran's status, or on the basis of any other category protected under federal, state and local laws. If you have experienced sexual harassment, sexual assault, or any other form of protected class discrimination, we encourage you to make a report. If you report to a faculty member, she/he/they are obligated by policy to share knowledge, notice, and/or reports of harassment, discrimination, and/or retaliation with the Title IX Coordinator. These disclosures include but are not limited to reports of sexual assault, dating/domestic violence, and stalking. You may also make a confidential report to a SJC Counselor. Please refer to San Juan College's [Title IX](#) site for further details.

San Juan College's Title IX Coordinator is Stacey Allen, Assistant Director of Human Resources/Equity, Diversity, and Inclusion Officer. The office is located at the Educational Services Center Building, 2nd Floor, Human Resources, Room 4243 at (505) 566-3515 or allens@sanjuancollege.edu.

7. Drop for Non-Attendance and/or Non-Participation

Class Attendance and Participation Expectation:

Face-to-Face -- Students are expected to attend and participate in class regularly. Any student missing more than 10% of consecutive class time, (For example, in a regular 15-week class that meets twice a week, this equates to the student missing 3 consecutive classes) without consultation with the instructor may be considered as having abandoned the course.

On-line -- Students are expected to participate regularly and submit all course assignments, based on the course guide definition. A student who does not submit any assignments during a consecutive 10% of the course (1.5 weeks of a 15-week semester) without consulting the instructor, may be considered as having abandoned the course. Logging in does not meet the attendance standard.

Competency-Based Education Classes -- Students are expected to have regular and substantive interactions with their instructor and to actively work on course content. A student who has not submitted coursework, nor had substantive interactions with the instructor over a consecutive 10% of the term, without the instructor's prior approval, will be considered to have abandoned the competency progression. Last date of attendance will be recorded as the last date that coursework was submitted or that the student met with the instructor. For on-line learners, logging in does not meet the attendance standard.

8. Failure to Meet Class Participation Expectation:

Students who fail to meet participation expectations will have their last date of attendance recorded. This date will be used to recalculate any financial aid received/veteran's benefits received, and the student may be required to repay the institution/government. If the student does not drop the course, an 'X' grade will be recorded. An 'X' grade impacts the grade point average the same as an 'F'.

9. Grading Policies

Incomplete: Incomplete Grade Assignment ([Incomplete Grades Information](#))

The grade of I (Incomplete) is given for passing work that could not be completed during the semester because of circumstances beyond the student's control. Ordinarily, the assignment of an I is given by the course instructor at the time final grades are due

In no case is an I grade to be used to avoid assignment of D or F grades for marginal or failing work or to require a student to enroll in the class the next semester because work was not completed on time. Circumstances warranting the issuance of an I grade must be beyond the student's control and must be documented on the appropriate form prior to approval.

I grades can be removed only during the subsequent 16 weeks from the end of term, or within the time limit set by the instructor. Removal of an I is accomplished by completing the work in a manner acceptable to the instructor. Re-enrollment in

the course under the repeat option does not remove the prior grade of I. Students should not re-enroll for the course. An I not made up within 16 weeks or within the time limit set by the instructor will change to an F grade thereafter and cannot be changed by work completion.

10. **Grade Appeals**

The policy for grade appeals is in the Academic Catalog. ([Grade Appeal Policy](#))

Student Handbook

The Student Handbook provides information on Student support, student organizations, and San Juan College policies.

[Student Handbook](#)

Program Handbook

Students will have access to Handbook when they are officially in the course.