



**BIOL 2225 Human Anatomy & Physiology II section name section credit
hours Credits
Syllabus**

Course Information

Meeting times and location: section meeting_times section location

Catalog description: This course is the second of two that serve as an introduction to human anatomy and physiology for biology majors and allied health students. The course entails describing, explaining, and analyzing structure and function from the submicroscopic to the organismal level with emphasis on specific cellular, tissue, and organ structure and physiology, and organ system structure and function? specifically the endocrine, cardiovascular, respiratory, urinary, and reproductive systems. Additionally, an analysis of these concepts is included: fluid and electrolyte balance, pregnancy, growth and development from zygote to newborn, and heredity.

Prerequisites: BIOL-2210 BIOL-2210L(BIOL-252)

Terms offered: All Semesters

Section-specific Course Description:

Course Level Objectives

1. Describe and apply anatomical terminology.
2. Describe multi cellular organization.
3. Distinguish and describe major tissue types.
4. Describe the structure and function of the integumentary system.
5. Describe the structure and function of the skeletal system.
6. Describe the structure and function of the muscular system.

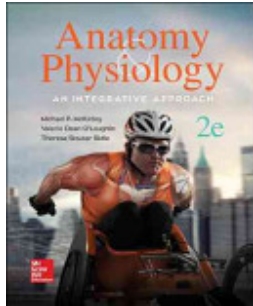
7. Describe the structure and function of the nervous system.
8. Describe the structure and function of the special senses.
9. Define homeostasis and describe specific examples for the integumentary, skeletal, muscular, and nervous systems.

This course has a corequisite lab, so you should be enrolled in the 2225L course. Both the requirements and assignments for the lab are integrated into this syllabus and Canvas page, so that you can access them in one place. Students will receive the same grade for the lecture and laboratory portions of this course.

The learning objectives for the laboratory portion of this course are:

1. Apply the scientific method correctly.
2. Collect, analyze, and interpret scientific data.
3. Use laboratory equipment, such as a microscope, correctly and safely.
4. Identify the anatomical components of human tissues, organs, and organ systems using prepared microscope slides, models, diagrams, illustrations, or cadaver specimens.
5. Describe the functional characteristics of human tissues, organs, and organ systems using prepared microscope slides, models, diagrams, illustrations, or cadaver specimens.
6. Analyze the physiological processes of the endocrine, cardiovascular, lymphatic, respiratory, digestive, urinary, and reproductive systems.
7. Analyze the physiological processes of fluid and electrolyte balance and acid base balance in the human body.
8. Analyze heredity and genetic control.

Required Texts and/or Materials



Anatomy & Physiology: An Integrative Approach

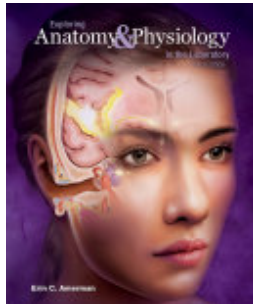
9780078024283

Theresa Bidle, Michael McKinley, Valerie O'Loughlin

McGraw-Hill Education

2015-01-07

* Electronic access to this book is included with your course fees*



Exploring Anatomy & Physiology in the Laboratory

9781617316210

Erin C. Amerman

Morton Publishing Company

2017-02-01

Required Technology and Software

- Canvas
- Chrome, Safari, or Firefox

Technical Support

Technical support is available through the San Juan College Help Desk 24/7/365. The help desk can be reached at 505-566-3266 or by creating a ticket at [San Juan College Help Desk](#).

For tickets and password reset: [San Juan College Help Desk](#)

For Canvas support information: [Canvas Support](#)

Accessibility/Privacy Policies for all Technology Tools Used

[Accessibility/Privacy Policies for all Technology Tools Used](#)

Course Requirements

Students will do the following activities:

- **Exams and Lab Practicals** – Lecture exams and lab practicals for each unit. Make-up or online exams are only allowed in extreme circumstances, and documentation must be provided.
 - Lecture Exams- There will be 4 lecture exams composed of 50 multiple choice questions and short answer questions.
 - Lab Practicals- There will be 4 lab practicals (exams). Lab exams consist of 50 fill-in the blank questions.
- **Quizzes** – Online quizzes will be given covering the material from each chapter. Quizzes must be taken during the scheduled time. There will not be any extensions for quizzes.
- **Homework** – Homework for each chapter will be due at the time of the exam covering that chapter. Each chapter homework is worth five points.
- **Lab book** – For each lab unit covered, the lab book sections listed below must be completed and submitted.
- **Other assignments** may be given periodically. These assignments will include quizzes, group work, and discussion questions. The number of points and due date will be given at the time the assignment is handed out.

COVID Safe Practices for Being on Campus

Masks / cloth face coverings must be worn while on campus in accordance with the New Mexico public health order. If you feel that you cannot wear a mask due to health complications, please contact Disabilities Services:

disabilityservices@sanjuancollege.edu or call (505) 566-3271. Hand sanitizer stations are at all building entrances, please “wash in, wash out”--clean your hands when you enter and before you leave. Classrooms and labs have been arranged to allow for social distancing; please respect your classmates and instructors by staying 6 feet away from everyone. You will be expected to disinfect your table or area prior to class and after class, cleaning products will be provided for this purpose. Check with your instructor for specific policies for their course. Please do not congregate in hallways or common areas, instead utilize our beautiful outside spaces and weather to visit with your friends and colleagues from a safe distance.

If you have been in contact with anyone who has tested positive for COVID-19, has symptoms, or is waiting on test results, contact your instructor and DO NOT come to class. If you have tested positive, have symptoms or are waiting on test results, contact your instructor and DO NOT come to class. Your health care provider or the assigned contact tracer will let you know when it is safe for you to be around others.

Student Support

Student Services and Support

The Student Support webpage provides information on counseling, tutoring, technical support, and many other support services available to San Juan College students.

[Student Support](#)

Academic Support

Academic Support webpage provides information on academic advising, the library, Testing Center, and the honors program.

[Academic Support](#)

Participation and Attendance Policy

- This course will require a great deal of time and effort. Students are expected to read all chapters, watch all lectures, complete homework and lab book assignments independently. It is important that keep up with this work.
- Students are expected to attend and fully participate in class meetings
- Attendance is required for both lecture and lab classes. If you must miss a lecture or lab, you are responsible for the material covered during that period.
- Tardiness is highly discouraged. Class will start on time. Extra time in lab or on exams will not be given to late arrivers. If you must be late, please enter quietly and sit in the first available seat.

Canvas Participation and Expectations

Students should log onto Canvas at least four days a week. All lectures and quizzes are available on Canvas. Additionally, access to the textbook and homework assignments are available through Canvas.

Instructor Response Time

Students can expect that the instructor will check email each day on Monday-Thursday. Emails are usually answered in less than 24 hours on weekdays. However, responses may take longer on weekends.

Course Time Commitment

This course is expected to require **at least** 12-15 hours of time per week outside of class time.

Grading

Final grades will include the following....

- Four Lecture Exams worth 100 points each.
- Four Lab Exams worth 50 points each.
- One Final Exam worth 200 points.
- Other points as assigned by the instructor.

Grades are calculated by: $\text{points earned} / \text{points offered during the semester} \times 100 =$

A	100-90
B	89-80
C	79-70
D	69-60
F	59-0

Key Dates to Remember

[Full Academic Calendar](#)

Course Schedule

	Lecture Topic
Week 1	Ch 17 Endocrine System
	Ch 17 Endocrine System
Week 2	Ch 18 Blood
	Ch 18 Blood
Week 3	Ch 19 Cardiovascular System
	Ch 19 Cardiovascular System
Week 4	Exam 1
	Ch 20 Blood Vessels
Week 5	Ch 20 Blood Vessels
	Ch 21 Lymph
Week 6	Ch 21 Lymph
	Ch 22 Immunity
Week 7	Ch 22 Immunity
	Exam 2
Week 8	Ch 23 Respiratory System
	Ch 23 Respiratory System
Week 9	Ch 23 Respiratory System
	Ch 24 Urinary System
Week 10	Ch 24 Urinary System
	Ch 25 Fluid and Electrolytes
Week 11	Exam 3
	Ch 26 Digestive System
Week 12	Ch 26 Digestive System
	Ch 27 Nutrition
Week 13	Ch 27 Nutrition
	Ch 28 Reproduction
Week 14	Ch 28 Reproduction
	Ch 29 Development
Week 15	Ch 29 Development
	Exam 4
Week 16	Review for the final
	Final Exam

College Policies

The following information also applies to your work in this class. If you have special needs for campus emergency situations, please inform me immediately.

1. **Academic Accommodations - American with Disabilities Act (ADA)**

If you believe you need academic accommodations due to physical or learning disabilities, you are encouraged to inform them as soon as possible. The coordinator can work with you in verifying your disabilities and developing accommodation strategies. Please go to [Disability Services Office](#), click the button for “Request for Services” and complete all the steps.

You can also contact the college’s disability coordinator in the Advising/Counseling Center at 566-3271 or disabilityservices@sanjuancollege.edu. More information is available on the website listed above.

2. **The Family Educational Rights and Privacy Act (FERPA)**

Your personal information and grade are confidential. Aside from routine reporting to the college required for this course, I will not share such information with anyone unless I have your permission.

3. **Academic Honesty Rules**

San Juan College expects all students to adhere to the [Academic Honesty Rules](#) as posted online. These are the official guidelines for all classes at San Juan College (July 2006).

4. **Student Conduct Statement**

College is preparation for professional opportunities, and professional conduct is expected in courses, including online classes, as well as any written communications, and interactions with members of the college community. As part of our learning community, students are expected to interact and communicate in a mature, respectful, thoughtful, and supportive manner. Students who demonstrate disrespectful, hostile, belittling, bullying or other disruptive behavior will be subject to potential consequences and possible dismissal from the college. The college will take appropriate action when students demonstrate threatening behavior (to others or self). Students should refer to the Code of Conduct in the Student Handbook for additional information.

5. **Student Safety**

Keeping students safe is a priority, and part of that is ensuring that we have the ability to communicate emergency messages – whether for school closures due to weather or for more or urgent situations. Rave is San Juan College’s emergency messaging system. Through your SJC student email, you will automatically receive email messages, however, it is also vital that you receive text messages. In order to receive the messages, you must register in a simple process with [Rave](#). When registering, please make sure that your mobile status is “confirmed.”

The Department of Public Safety is available 24 hours per day. In an emergency, they can be accessed by calling 215-3091 or 566-3333.

In the event of an emergency, a Rave message will be sent, and depending on the situation, you will be instructed to do one of the following:

- Evacuate the building
- Shelter in place (Campus doors are locked, and operations continue as normal. During this situation, no one other than law enforcement is allowed in or out of the campus.)
- Lockdown (Campus doors are locked. All operations cease, and you should take cover in your immediate area. No one other than law enforcement is allowed in or out of the campus.)

6. **Non-Discrimination, Sexual Harassment, and Retaliation.**

San Juan College does not discriminate on the basis of race, color, religion, sex, sexual orientation, gender identity, national origin, disability, age, genetic, veteran's status, or on the basis of any other category protected under federal, state and local laws. If you have experienced sexual harassment, sexual assault, or any other form of protected class discrimination, we encourage you to make a report. If you report to a faculty member, she/he/they are obligated by policy to share knowledge, notice, and/or reports of harassment, discrimination, and/or retaliation with the Title IX Coordinator. These disclosures include but are not limited to reports of sexual assault, dating/domestic violence, and stalking. You may also make a confidential report to a SJC Counselor. Please refer to San Juan College's [Title IX](#) site for further details.

San Juan College's Title IX Coordinator is Stacey Allen, Assistant Director of Human Resources/Equity, Diversity, and Inclusion Officer. The office is located at the Educational Services Center Building, 2nd Floor, Human Resources, Room 4243 at (505) 566-3515 or allens@sanjuancollege.edu.

7. **Drop for Non-Attendance and/or Non-Participation**

Class Attendance and Participation Expectation:

Face-to-Face -- Students are expected to attend and participate in class regularly. Any student missing more than 10% of consecutive class time, (For example, in a regular 15-week class that meets twice a week, this equates to the student missing 3 consecutive classes) without consultation with the instructor may be considered as having abandoned the course.

On-line -- Students are expected to participate regularly and submit all course assignments, based on the course guide definition. A student who does not submit any assignments during a consecutive 10% of the course (1.5 weeks of a 15-week semester) without consulting the instructor, may be considered as having abandoned the course. Logging in does not meet the attendance standard.

Competency-Based Education Classes -- Students are expected to have regular and substantive interactions with their instructor and to actively work on course content. A student who has not submitted coursework, nor had substantive interactions with the instructor over a consecutive 10% of the term, without the instructor's prior approval, will be considered to have abandoned the competency progression. Last date of attendance will be recorded as the last date that coursework was submitted or that the student met with the instructor. For on-line learners, logging in does not meet the attendance standard.

8. Failure to Meet Class Participation Expectation:

Students who fail to meet participation expectations will have their last date of attendance recorded. This date will be used to recalculate any financial aid received/veteran's benefits received, and the student may be required to repay the institution/government. If the student does not drop the course, an 'X' grade will be recorded. An 'X' grade impacts the grade point average the same as an 'F'.

9. Grading Policies

Incomplete: Incomplete Grade Assignment ([Incomplete Grades Information](#))

The grade of I (Incomplete) is given for passing work that could not be completed during the semester because of circumstances beyond the student's control. Ordinarily, the assignment of an I is given by the course instructor at the time final grades are due

In no case is an I grade to be used to avoid assignment of D or F grades for marginal or failing work or to require a student to enroll in the class the next semester because work was not completed on time. Circumstances warranting the issuance of an I grade must be beyond the student's control and must be documented on the appropriate form prior to approval.

I grades can be removed only during the subsequent 16 weeks from the end of term, or within the time limit set by the instructor. Removal of an I is accomplished by completing the work in a manner acceptable to the instructor. Re-enrollment in the course under the repeat option does not remove the prior grade of I. Students should not re-enroll for the course. An I not made up within 16 weeks or within the time limit set by the instructor will change to an F grade thereafter and cannot be changed by work completion.

10. **Grade Appeals**

The policy for grade appeals is in the Academic Catalog.([Grade Appeal Policy](#))

Student Handbook

The Student Handbook provides information on Student support, student organizations, and San Juan College policies.

[Student Handbook](#)